

TOKYO
OCTOBER 2024

CLEAN ENERGY PRECINCT



ABOUT PORT OF NEWCASTLE



25
DIFFERENT
CARGOES

TOTAL TRADE VOLUME
152 MILLION TONNES

TOTAL TRADE VALUE
\$48 BILLION

**WORLD'S LARGEST
COAL PORT**

**4,426 SHIP
MOVEMENTS**

**MEALS, GRAIN &
WHEAT EXPORTS**
2,413,988
MASS TONNES

COAL EXPORTS
144,493,142
MASS TONNES

**FERTILISER
IMPORTS**
527,408
MASS TONNES

CLEAN ENERGY **PRECINCT**



PORT of **NEWCASTLE**

CLEAN ENERGY PRECINCT

PILLARS FOR DELIVERY



1. Power and water access and existing infrastructure.



2. Unrivalled Port capability, supply chain access, and demand from an existing customer base.



3. Skilled people to support a centre of excellence for a new energy economy in the Hunter.

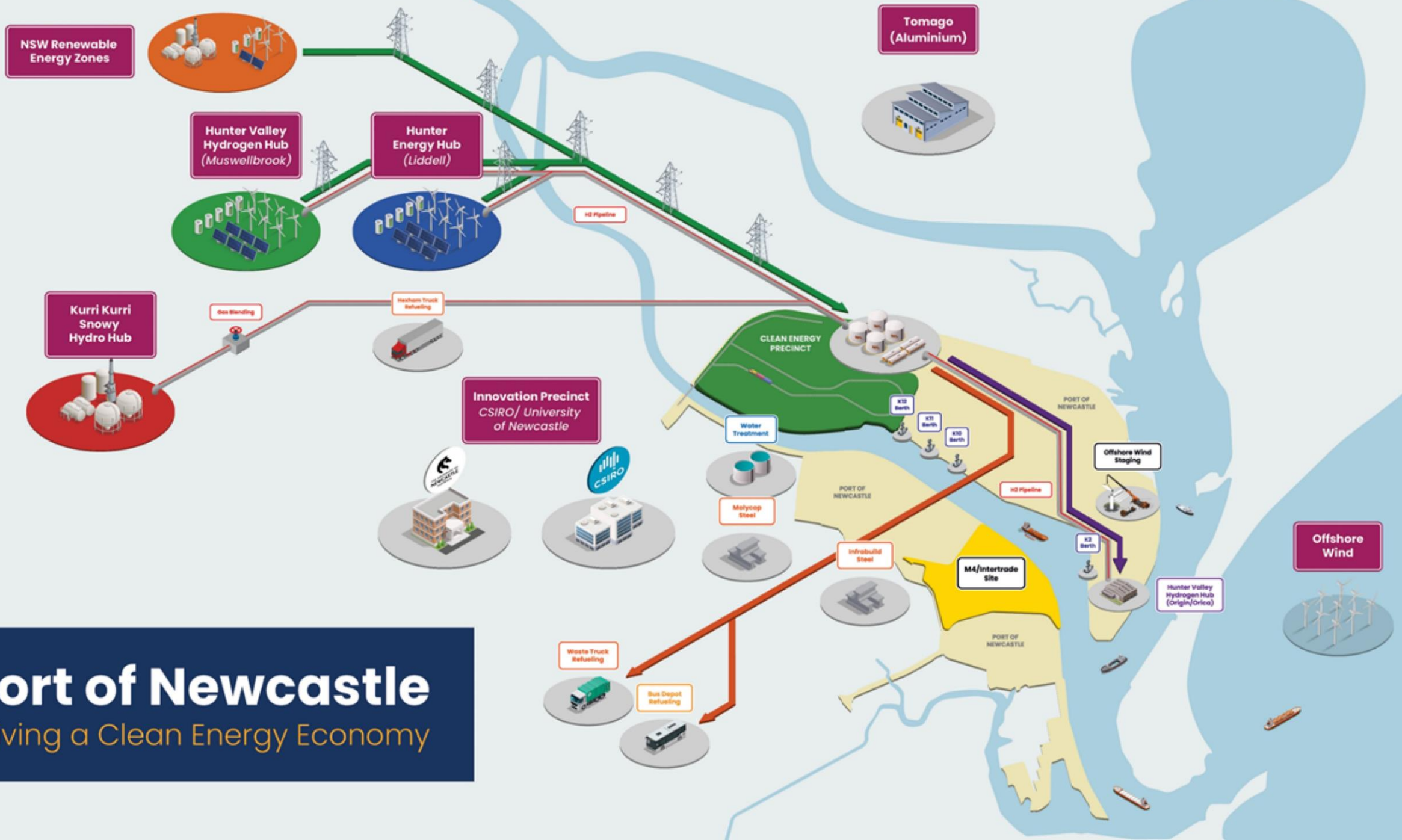
Australia's clean energy's one-stop-shop for:

- Production
- Storage
- Domestic Distribution
- Transmission
- International Export

Port of Newcastle's Clean Energy Precinct has received a \$100 million funding grant from the Australian Government, administered by the NSW Government.

Port of Newcastle

Driving a Clean Energy Economy



VISION OF THE PROJECT

CURRENT STATE

PROPOSED PROJECT DEVELOPMENT

Ancillary and civil works

- Site buildings
- Offices and administration facilities
- Internal roads
- Car parking
- Warehousing
- Laydown areas
- Storage yards
- Staging areas
- Clean energy storage facility
- Associated pipeline infrastructure

Electrical

- Grid connection
- Transmission infrastructure
- Substation
- Switchyard

Water and recycled water

- Network connection
- Supply corridors

FUTURE STATE

VISION OF THE PROJECT

> **\$4.2 BILLION**

added to the gross regional product in the Hunter Region by 2040⁽¹⁾

+5,800

NEW HUNTER REGION JOBS BY 2040⁽¹⁾

~1 million tonnes annual reduction in export carbon emissions⁽²⁾, equivalent to taking about 217,391 petrol-fuelled cars off the road for a year

PRODUCTION OF AND EXPORT DEMAND FOR GREEN AMMONIA >600,000 KTPA FROM 2030 ONWARDS

Use of 1.6 gigawatts of electricity and 22 megalitres of recycled water with no impact on utilities or our community

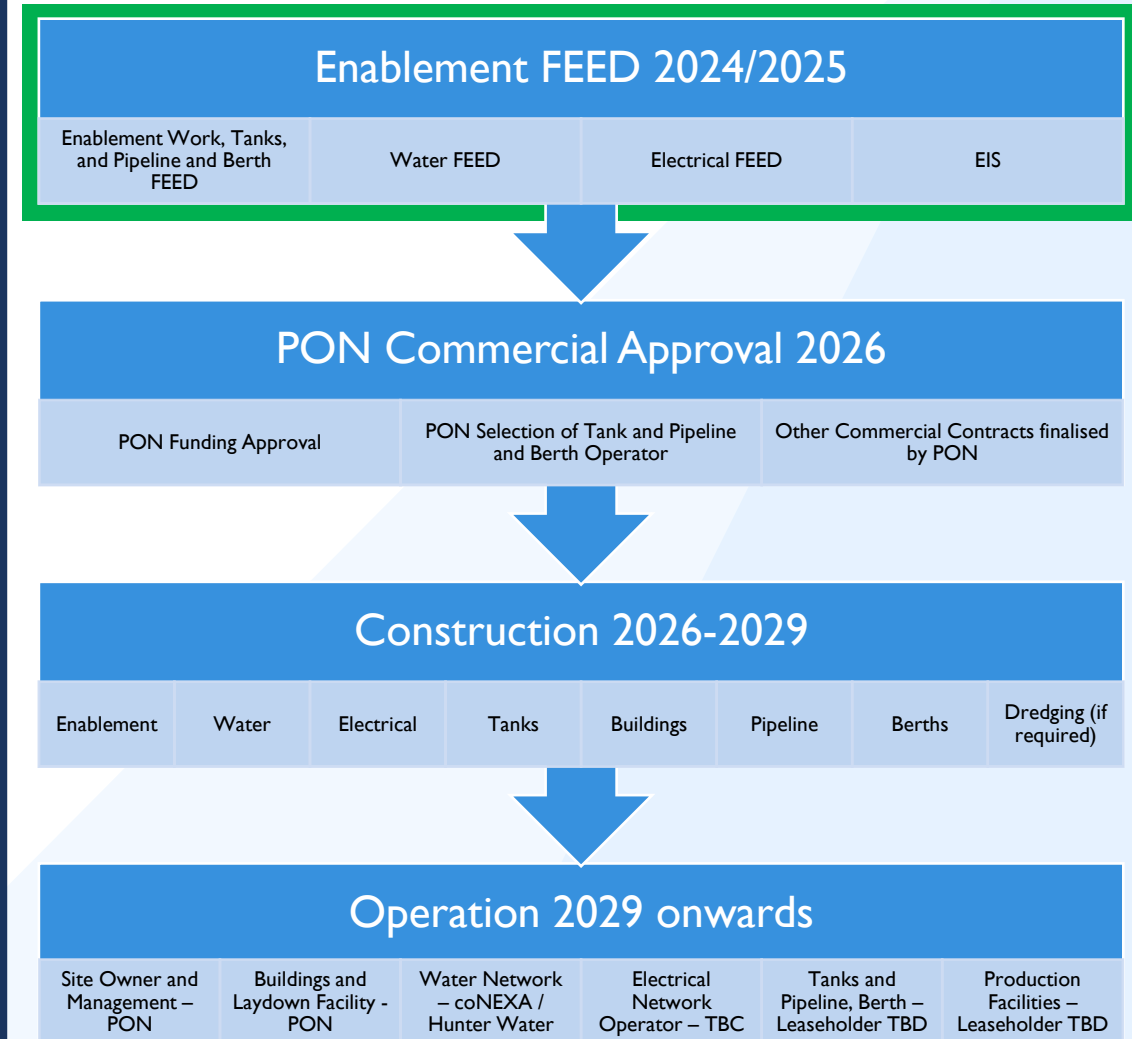
660,000 TONNES

ANNUAL REDUCTION IN DOMESTIC CARBON EMISSIONS⁽²⁾, EQUIVALENT TO TAKING ABOUT 143,478 PETROL-FUELLED CARS OFF THE ROAD FOR A YEAR

Support ~1.6 gigawatts in renewable energy generation⁽²⁾, equivalent to powering about 1.7 million average Australian households for a year

**RE-SKILLING
16,000
EXISTING MINING
EQUIPMENT
TECHNOLOGY
SERVICES
(METS) WORKERS**

Milestone Timeline





PORT of NEWCASTLE

CLEAN ENERGY PRECINCT



+61 2 4908 8200



CEP@pon.com.au



www.pon.com.au